

# Kane County Corn Growers Plot - 2011



**Grower:** Kane County Corn Growers  
**Farm:** Plot  
**Acres:** 76.49

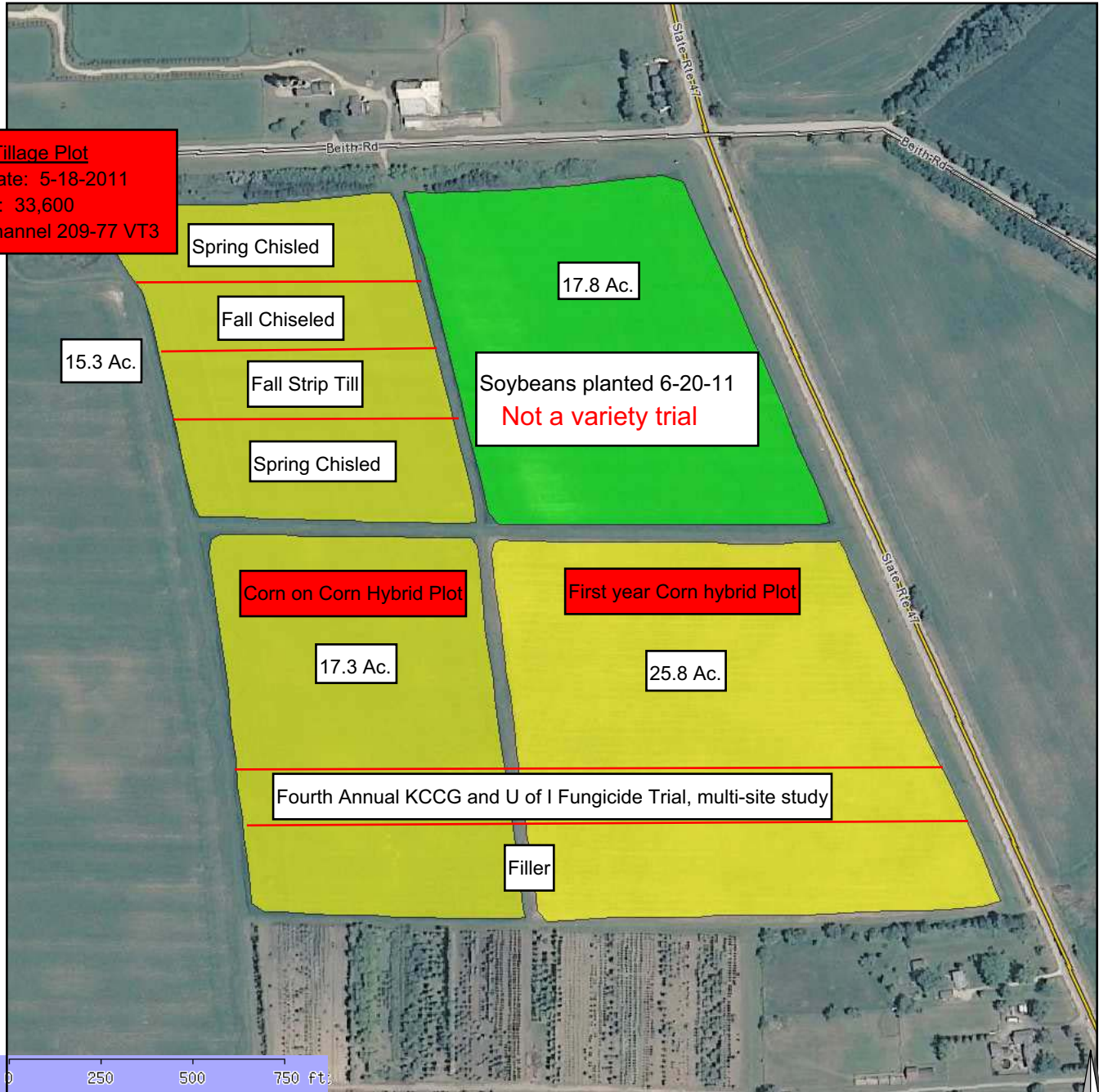
**Field(s):** Northeast - 17.77 A., Northwest - 15.25 A., Southeast - 25.75 A., Southwest - 17.25 A.

**Tillage Plot - 15.3 Ac**  
 200 #/A Nitrogen 32%  
 2 Pt/A Triple Flex  
 Post  
 27 oz/A Roundup

**Corn on Corn Hybrid Plot - 17.3 Ac**  
 200 #/A Nitrogen 32%  
 2 Pt/A Triple Flex  
 Post  
 27 oz/A Roundup WeatherMax

**First Year Corn Hybrid Plot - 25.8 Ac**  
 200 #/A Nitrogen 32%  
 5.6 oz/A Corvus  
 1 Qt/A Atrazine 4L  
 Post  
 27 oz/A Roundup WeatherMax

**Soybean Variety Plot - 17.8 Ac.**  
 3 Qt/A Intro  
 Post  
 27 oz/A Roundup WeatherMax  
 4 oz/A AS Select



**Tillage Plot**  
 Planting Date: 5-18-2011  
 Population: 33,600  
 Hybrid: Channel 209-77 VT3

Spring Chisled

Fall Chiseled

Fall Strip Till

Spring Chisled

Corn on Corn Hybrid Plot

First year Corn hybrid Plot

Fourth Annual KCCG and U of I Fungicide Trial, multi-site study

Filler

15.3 Ac.

17.8 Ac.

17.3 Ac.

25.8 Ac.

Soybeans planted 6-20-11  
 Not a variety trial

# Corn Hybrid Plot Planting Details

<b>Planting Date</b>	5/18/2011	<b>Fertilizer:</b> 200 #/A Nitrogen 32%
<b>Population</b>	33,600	<b>1st yr. corn Herbicide:</b> 5.6 oz/A Corvus (Donated by Bayer)
<b>Check</b>	Channel 209-77 VT3	1 Qt/A Atrazine 4L
<b>Volunteers</b>	Nick Nagele - Golden Harvest Randy Pauli - Great Lakes John Biddle - KCCG Bob Biddle - KCCG Jeff Keifer-Elburn Co-op/KCCG	<b>C on C Herbicide:</b> 2 Pt/A Triple Flex (Donated by Monsanto)
		<b>Applied: 5-19-11</b> (Application donated by Elburn Co-op)

## Planting Order North to South

### Corn on Corn

### First Year Corn

32 Rows	Filler	Filler
8 Rows	Check	Check
8 Rows	Channel 211-99 VT3	Channel 202-32 Smart Stax
8 Rows	Golden Harvest 8940 3000 GT	Golden Harvest 8577 3000 GT
8 Rows	Check	Check
8 Rows	Dairyland 9410	Dairyland 9313 Smart Stax
8 Rows	Dekalb 6297	Dekalb 5883
8 Rows	Check	Check
8 Rows	FS 61BX1 Smart Stax	FS 60MV4 VT3P
8 Rows	Filler	DeRaedt Dist. Agra 566 GT 3000
8 Rows	Check	Check
8 Rows	Becks 5354 AM1	Becks 4817 AM1
8 Rows	Munson 6805 VT3P	Munson 7043 VT3P
8 Rows	Check	Check
8 Rows	Agrigold 6458 VT3	6384 VT3 PRO
8 Rows	Renk 744 VT3 PRO	Renk 848 VT3 PRO
8 Rows	Check	Check
8 Rows	Croplan 5757 VT3	Croplan 6125 VT3
8 Rows	Steyer 10603 Smart Stax	Steyer 10903 VT3P
8 Rows	Check	Check
8 Rows	Pioneer 1018 AM1	Pioneer 1184 AM1
8 Rows	Great Lakes 5643 VT3 PRO	Great Lakes 5939 G3VT3
8 Rows	Check	Check
8 Rows	Burrus 5A45 AM1	Hughes 6435 GT3
8 Rows	Wyffels W4179	Wyffels W 7147
8 Rows	Check	Check
8 Rows	Stone 5913	Stone 6128
8 Rows	Check	Check
16 Rows	U of I Fungicide Test Plot	U of I Fungicide Test Plot
Field Balance	Filler	Filler